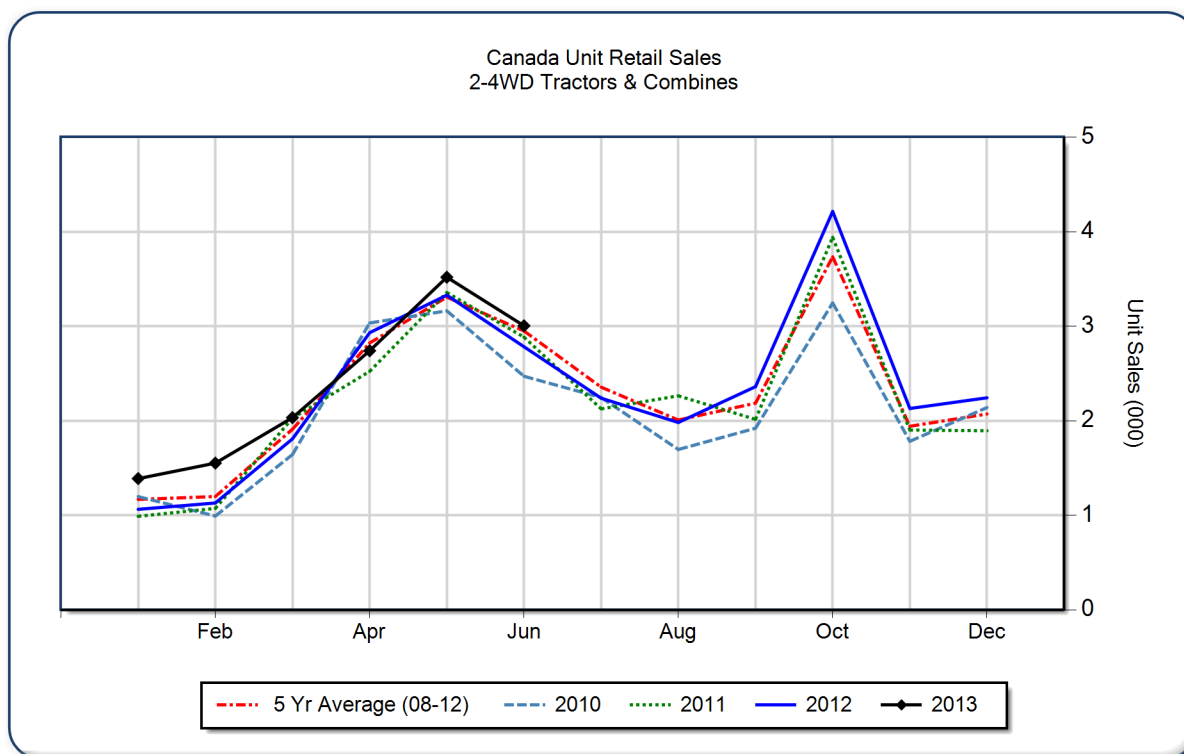


June 2013 Flash Report Canada Unit Retail Sales

Copyright, AEM. All rights reserved. If data is referenced, please acknowledge AEM as the source.

	June			YTD - June			Beginning Inventory Jun 2013
	2013	2012	%Chg	2013	2012	%Chg	
2WD Farm Tractors							
< 40 HP	1,762	1,541	14.3	6,907	6,106	13.1	8,368
40 < 100 HP	509	579	-12.1	2,856	3,010	-5.1	3,522
100+ HP	450	352	27.8	2,636	2,315	13.9	2,663
Total 2WD Farm Tractors	2,721	2,472	10.1	12,399	11,431	8.5	14,553
4WD Farm Tractors	87	70	24.3	832	786	5.9	619
Total Farm Tractors	2,808	2,542	10.5	13,231	12,217	8.3	15,172
Self-Prop Combines	197	241	-18.3	1,007	829	21.5	1,035



These data are, in part, estimates that are subject to revisions when final detail data become available. Because of the seasonal nature of the industry, comparisons of monthly data from one period to another should be done with extreme caution. These data represent most, but not all, of the manufacturers in each product category being sold at retail in Canada.

Restricted Information from the Association of Equipment Manufacturers